

PROSCUT15W How to Replace parts-Instruction

Separation pad



"Separation Pad", individually separates each sheet of paper as it's being fed into the machine. The separation pad can be easily replaced after wear and tear that will occur over time.

Separation pads are available as a replacement part (10 sheets/pack)

Step 1

1. Open top panel and unlock feeder unit to open.
2. Remove separation pad.



Feed unit.

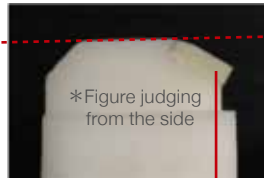


Separation pad



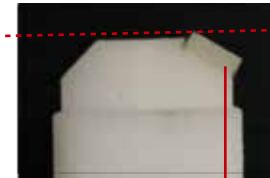
Carefully peel off using your fingers.

3. Peel off the label from the back of the new separation pad and firmly place the separation pad alongside the white plastic piece as illustrated.



*Figure judging from the side

Once the separation pad is at level "with plastic part" as illustrated, It's time for a replacement since it is a sign of wear and tear.



New separation pad. Tip of the separation pad is taller than plastic pad.

4. Close the feeder unit and be sure it's firmly secured and locked.

Pick up roller



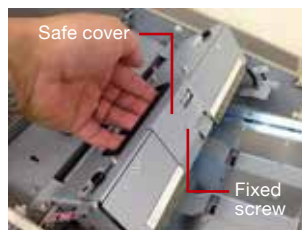
A: new article

B: We replaced for new article wear

"Pick up roller " assists in feeding sheets of paper in the machine. Once the pick up roller has a smooth surface, it is time to replace it. This is a replacement part that can be easily installed.

Step 2

1. Open feeder unit and remove safety cover using a screwdriver.
2. Unscrew knob and replace pick up roller. Please be careful about the directions at the time of the installation. The paper will not feed if installed in the reverse direction.



Safe cover

Fixed screw



Pickup roller

Knob screw



Metal bearing

Metal bearing facing out-GOOD



Plastic side facing out- NO GOOD

When considering the purchase of the above parts, please contact our agent or our distributor.